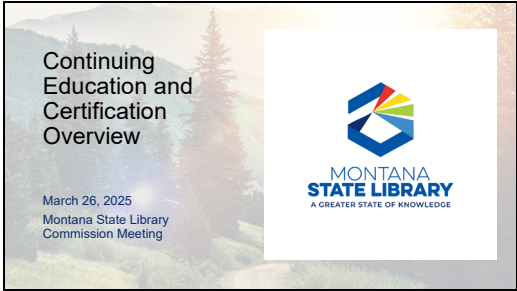


# Continuing Education and Certification Overview

Slide 1



---

---

---

---

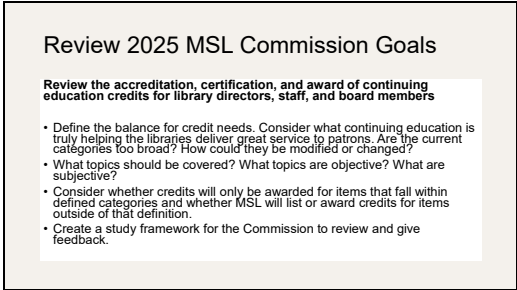
---

---

---

---

Slide 2



---

---

---

---

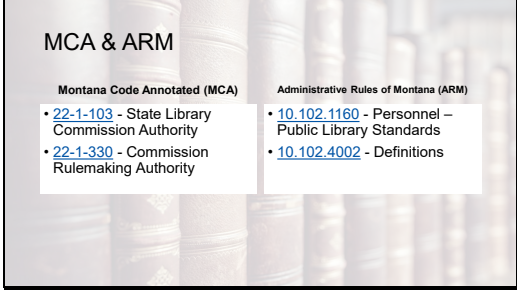
---

---

---

---

Slide 3



---

---

---

---

---

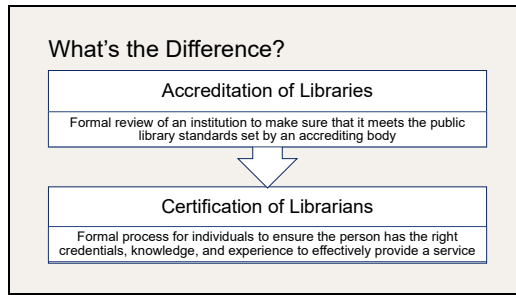
---

---

---

# Continuing Education and Certification Overview

Slide 4




---

---

---

---

---

---

---

---

Slide 5

**Accreditation & Certification Example**

Board/Commission	Accreditation Duty	Certification Duty	MCA	Institutional Accrediting Body
MT State Library Commission	Maybe*	Yes	22-1-103. State library commission -- authority	none
MT Board of Public Education (BPE)	Yes	Yes	20-2-121. Board of public education -- powers and duties	BPE (required, state) Cognia (voluntary, national)
MT Board of Pharmacy	Yes	Yes	37-7-201. Organization -- powers and duties	National Association of Boards of Pharmacy
MT Behavioral Health	No	Yes	37-39-103. Duties of board.	Joint Commission
MT Board of Barbers and Cosmetologists	Yes	Yes	37-31-203. Rulemaking powers.	none

---

---

---

---

---

---

---

---

Slide 6

**Accreditation & Certification**

Board/Commission	Accreditation Duty	Certification Duty	MCA	Institutional Accrediting Body
MT State Library Commission	Maybe*	Yes	22-1-103. State library commission -- authority	none

**\* Maybe**

- Adoption of standards into ARM defines the minimum program attributes of public libraries that are eligible for state aid.
- Libraries report annually on attainment of the public library standards.
- If a library faces a hardship that impacts their ability to meet one or more standards, the library may request a deferral from the State Librarian.
- The consequence of not meeting standards without a deferral is loss of state aid.

---

---

---

---

---

---

---

---

# Continuing Education and Certification Overview

Slide 7

**National Overview**

2022 State Library Administrative Agency (SLAA) Survey

- Purpose: SLAA survey provides descriptive information about state library agencies.
- Coverage: The data are collected from 50 states and the District of Columbia.

Role	# of SLAA
Certification of Librarians	24/51
Accreditation of Libraries	15/51

---

---

---

---

---

---

---

---

Slide 8

**Questions and Discussion**

Accreditation and Certification

---

---

---

---

---

---

---

---

# Continuing Education and Certification Overview

Slide 9



---

---

---

---

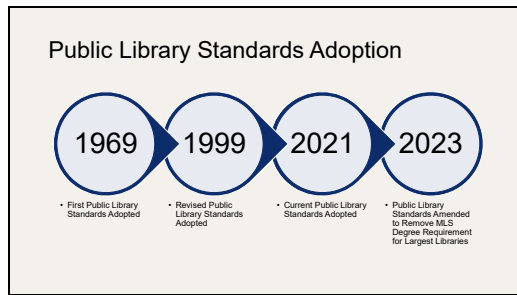
---

---

---

---

Slide 10



---

---

---

---

---

---

---

---

Slide 11

**Boards Meeting Public Library Standards**

Fiscal Year (FY)	Met Standard	Deferrals Requested
FY23	58	24
FY24	70	15

Libraries will report their FY25 Public Library Standards beginning in May.

---

---

---

---

---

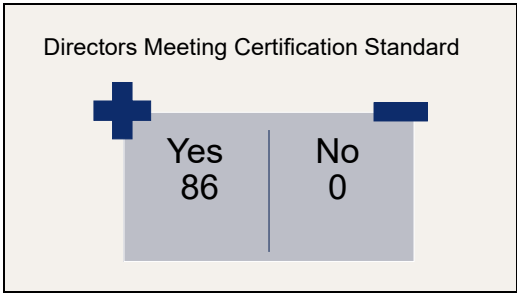
---

---

---

# Continuing Education and Certification Overview

Slide 12



---

---

---

---

---

---

---

---

Slide 13

Questions and Discussion  
Public Library Standards – Board Continuing Education

---

---

---

---

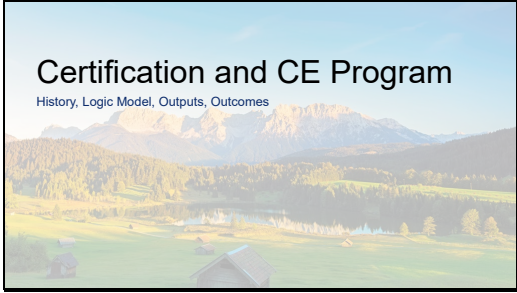
---

---

---

---

Slide 14



---

---

---

---

---

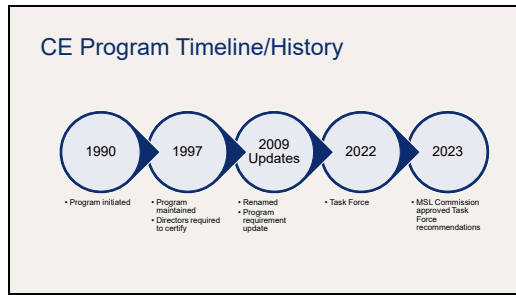
---

---

---

# Continuing Education and Certification Overview

Slide 15



---

---

---

---

---

---

---

---

Slide 16



[Video Link](#)

---

---

---

---

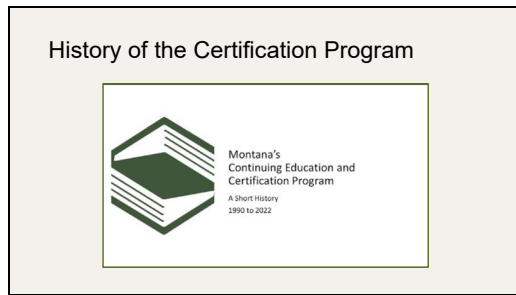
---

---

---

---

Slide 17



[Video Link](#)

---

---

---

---

---

---

---

---

# Continuing Education and Certification Overview

Slide 18

### 2022 Continuing Education and Certification Task Force

[Continuing Education and Certification Recommendations MEMO – June 2023](#)

Task Force Members	Charge to the Task Force	Meeting Recordings
<ul style="list-style-type: none"> <li>Jennifer Ball, Stillwater County Library Director</li> <li>Carmen Clark, Bozeman Public Library Staff</li> <li>Miranda Evenson, Sidney-Richland County Library Staff</li> <li>Pam Henley, Statewide Consulting Librarian, Montana State Library</li> <li>David Ingram, ImagineiF Libraries Trustee</li> <li>Tina Peterson, Harlowton Public Library Director</li> <li>Robyn Scribner, Montana State Library Commission Member</li> </ul>	<ul style="list-style-type: none"> <li>Participate fully in the activities of the task force and representatives of library staff, users, geographic location, and staff roles.</li> <li>Review and consider continuing education needs, opportunities, and recommendations from the State Library Commission and the Network Advisory Council.</li> <li>Review and consider continuing education needs and strategies for the library staff.</li> <li>Understand the 2022 Public Library Standards and changes to CE requirements.</li> <li>Evaluate the 2009 Goals for the CE program to the State Commission on changes to the State Commission.</li> <li>Evaluate the 2009 Continuing Education (CE) program to the State Commission and make recommendations for changes to the State Commission.</li> </ul>	<ul style="list-style-type: none"> <li>Meeting 1</li> <li>Meeting 2</li> <li>Meeting 3</li> <li>Meeting 4</li> <li>Meeting 5</li> <li>Meeting 6</li> </ul>

---

---

---

---

---

---

---

---

Slide 19

### Continuing Education Program Logic Model

**Inputs/Resources/Activities**  
What will we create, do or offer?

Current Staffing Status: 1 FTE, Modified	For Stakeholders
Supervised by: Lead Statewide Consulting Librarian	In person workshops, conferences, and institutes
Primary Stakeholders: Public Library Directors, Trustees, and Staff	Online Courses
Program Reporting to: State Library Commission	Webinars and Recordings
Program Tools: in person CE, newsletters, online learning, website, ASPeN	Newsletters
Funding: Library Services and Technology Act (Federal)	Continuing Education and Certification Webpages
	Consultation

---

---

---

---

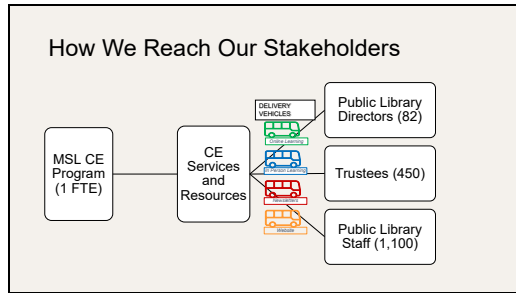
---

---

---

---

Slide 20




---

---

---

---

---

---

---

---

# Continuing Education and Certification Overview

Slide 21

**Outputs** What will we measure and report?

Description	Public Library Directors	Trustees	Staff	MSL Commission and Staff
# of offerings (events, videos, courses, resources)	x	x	x	x
# of attendees	x	x	x	x
# of newsletter subscribers	x	x	x	x
# of certified individuals	x	x	x	x
% of evaluation responses	x	x	x	x

---

---

---

---

---

---

---

---

---

---

Slide 22

**Outcomes** What will the stakeholders have as a result of accessing Outputs?

Directors	Trustees	Staff	Commissioners
Directors will have ready access to reliable, accurate, and up-to-date information to use for planning continuing education for themselves, their staff, and for trustees. Directors build their professional knowledge through learning opportunities across relevant continuing education categories.	Board members will have learned more about the laws, rules, roles, and responsibilities through ready access to reliable, accurate, and up-to-date CE and information resources.	Staff build their professional knowledge through learning opportunities across relevant continuing education categories.	Commissioners will have learned more about the laws, rules, roles, and responsibilities through ready access to reliable, accurate, and up-to-date CE and information resources.

---

---

---

---

---

---

---

---

---

---

Slide 23

**Questions, Discussion, Next Steps**

- Continuing Education Program
- Staff Draft Study Framework
- Continuing Education Credits
- Other Topics for June Meeting

---

---

---

---

---

---

---

---

---

---



# Continuing Education and Certification Overview

Slide 24




---

---

---

---

---

---

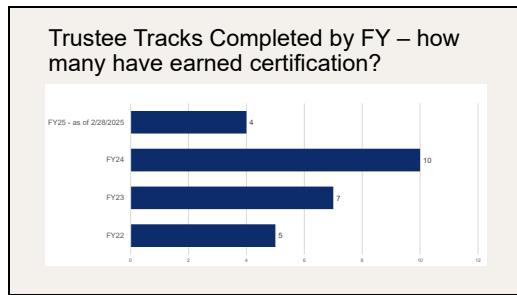
---

---

---

---

Slide 25




---

---

---

---

---

---

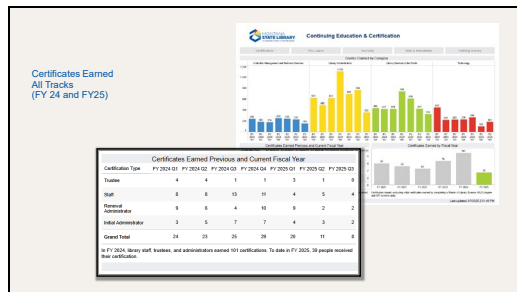
---

---

---

---

Slide 26




---

---

---

---

---

---

---

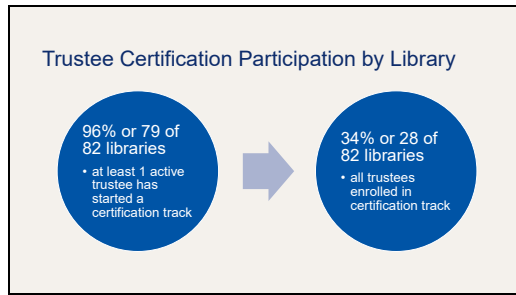
---

---

---

# Continuing Education and Certification Overview

Slide 27



---

---

---

---

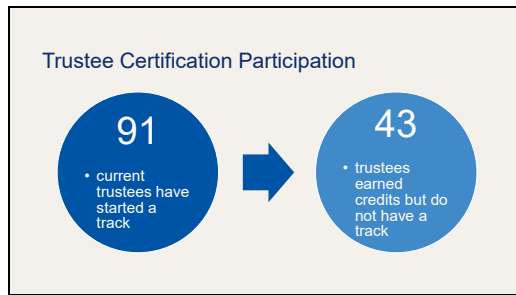
---

---

---

---

Slide 28



---

---

---

---

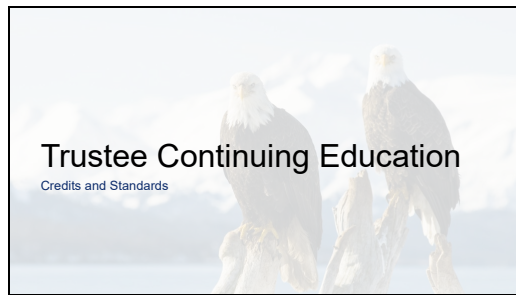
---

---

---

---

Slide 29



---

---

---

---

---

---

---

---

# Continuing Education and Certification Overview

Slide 30

**Trustee Continuing Education Standard**

**Standard**

- majority of library board members need to receive at least 3 hours of continuing education.
- 94% of public libraries meet this standard.

**Deferrals**

- 5 of 86 libraries asked for a deferral
  - 3 public libraries
  - 2 tribal college libraries.

---

---

---

---

---

---

---

---

---

---

Slide 31

**Trustee Credits (disaggregated)**

Year	Library Administration	Collection Management and Technical Services	Library Services to the Public	Technology	Grand Total
FY22	237.5	30	65.5	17	350
FY23	431	9.5	109	25	574.5
FY24	465.5	17.5	71	44.5	598.5
FY25 (YTD)	259	16	33	24.5	332.5

---

---

---

---

---

---

---

---

---

---

Slide 32

**Possible Goals for Trustees** What will we measure and report?

Metric	Trustee Goal
# of offerings (events, videos, courses, resources)	10 new offerings each FY
# of attendees	150/450
# of newsletter subscribers	450/450
# of certified individuals	100/450
% of evaluation responses	85% of evaluation responses in top 2 categories

---

---

---

---

---

---

---

---

---

---

# Continuing Education and Certification Overview

Slide 33

**Questions and Discussion**  
Trustee Continuing Education

---

---

---

---

---

---

---

---