

Summary: Resource Sharing in OCLC Interlibrary Loan and Montana Shared Catalog

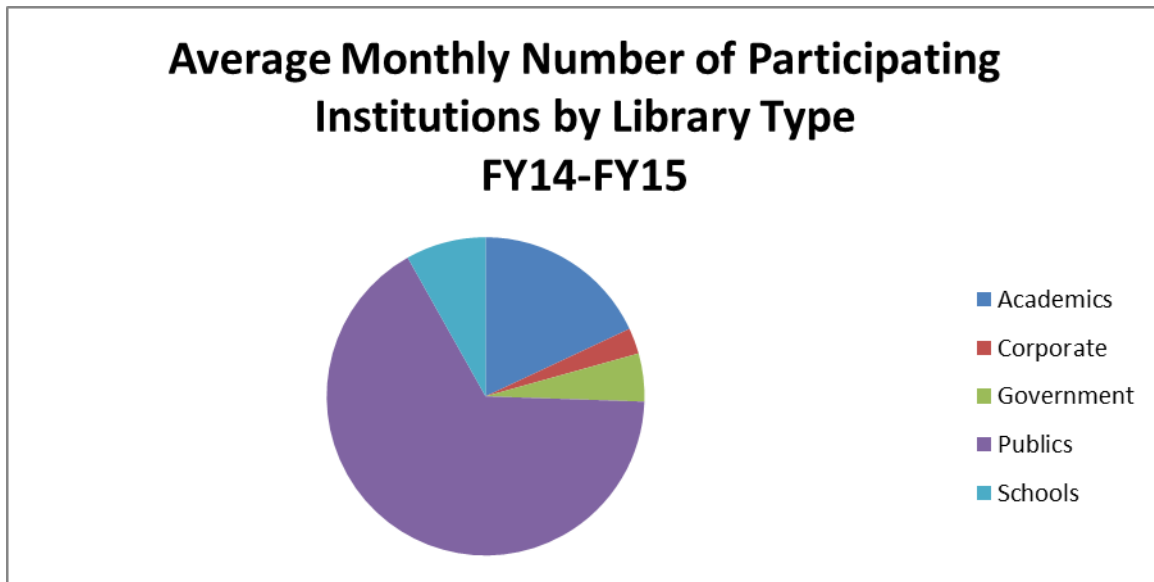
PART ONE: OCLC INTERLIBRARY LOAN

How many requests are being filled through OCLC?

Average 41,504 requests filled annually

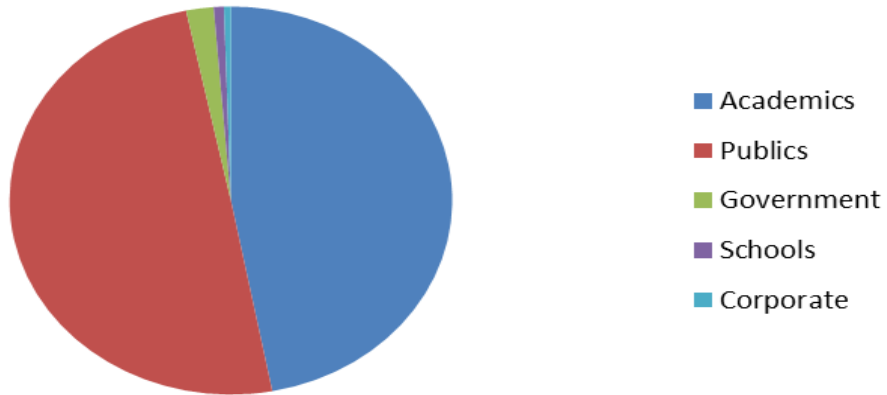
Who is borrowing items via OCLC?

Overall: Average 95 institutions per month (FY14-FY15 Year to Date as of May 2015) requesting items through OCLC ILL (33% of 272 enrolled in OCLC Group Services in FY14 and FY15 – not including 10 late enrollees in FY15)



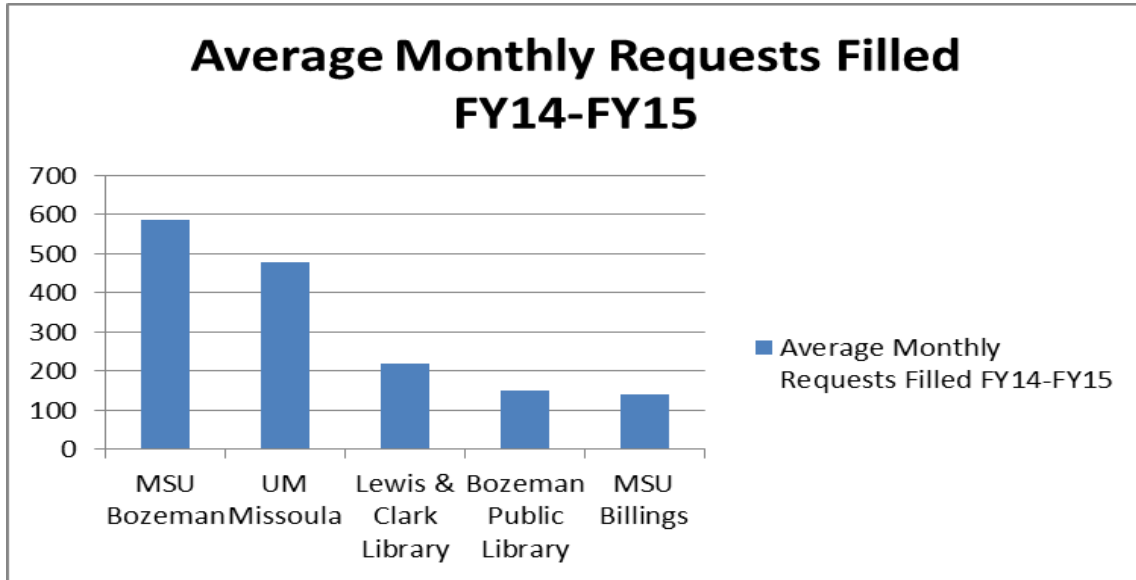
Library Type	Average Monthly Number of Participating Institutions by Library Type, FY14-FY15 YTD
Academics	17
Corporate	2.5
Government	5
Publics	63
Schools	8

Average Percentage of Requests Filled by Library Type FY14-FY15



Library Type	Average Percentage of Requests Filled by Library Type, FY14-FY15 YTD
Academics	47%
Publics	49.75%
Government	2%
Schools	0.75%
Corporate	0.50%

Which institutions are borrowing the most through OCLC?



Top 5 Borrowing Libraries	Average Number of Monthly Requests Filled FY14-FY15 YTD
MSU Bozeman	585
UM Missoula	480
Lewis & Clark Library	221
Bozeman Public Library	151
MSU Billings	139.5

How much borrowing and lending occurs in-state through OCLC?

Montana Group Services libraries borrowed 38% of ILL materials through OCLC from other Montana libraries and lent 36% of ILL materials through OCLC to other Montana libraries in FY15. These percentages decreased slightly from FY14, when the average percentage for both borrowing and lending was around 39%.

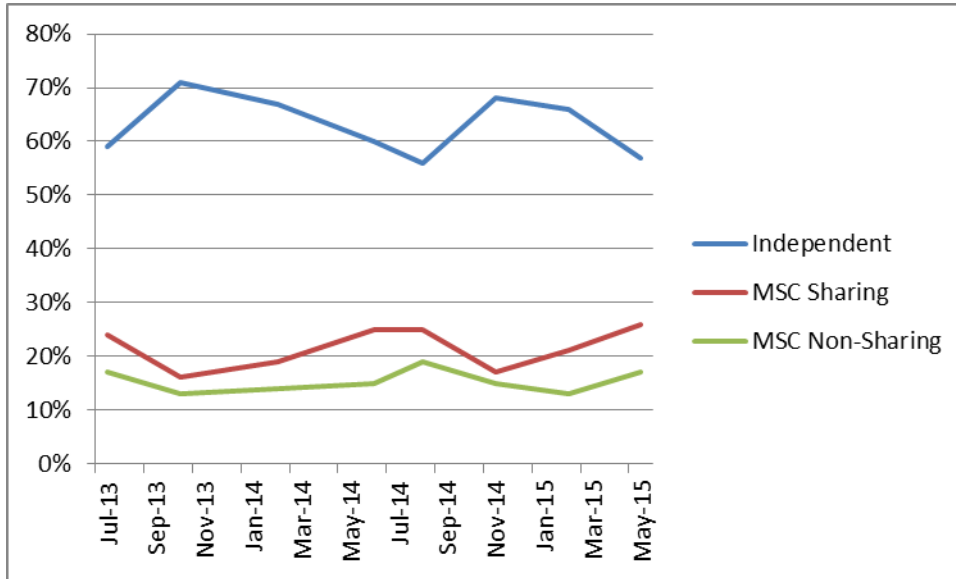
How does Montana Shared Catalog (MSC) library borrowing via OCLC compare with independent library use?

Overall average (FY14-FY15 YTD):

63% independent libraries

22% MSC sharing groups

15% MSC non-sharing

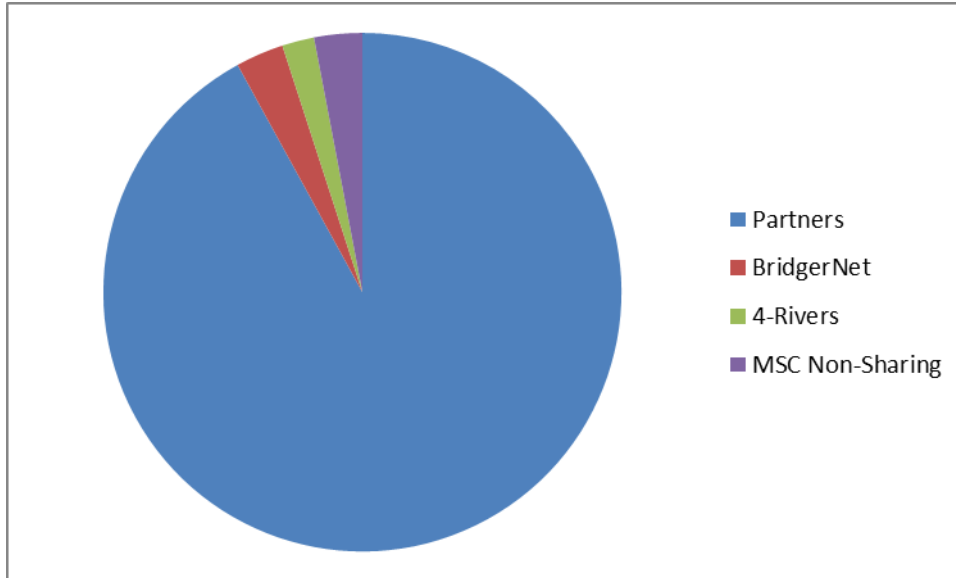


PART TWO: MONTANA SHARED CATALOG HOLDS

How many items were requested through the MSC as holds?

An average of 285,000 holds was sent each year for FY13-FY14 (FY15 YTD data not yet available).

Division of requests among MSC libraries:



Partners sharing group: 92%
BridgerNet sharing group (excluding Three Forks): 3%
4-Rivers sharing group (including Three Forks): 2%
All other MSC libraries not in sharing groups (includes library system transfers between branches): 3%

MSC sharing group libraries accessible via courier

(with at least one hub served by Critelli Couriers) in FY14-FY15 YTD:

4-Rivers	100%
Partners	94% (Mineral County Public Library not accessible)
BridgerNet	80% (Intermittent service to West Yellowstone Public Library)

Data Sources

Borrower Overview FY13-FY15 YTD June 2015.xls

Borrower Transaction Level Detail OCLC ILL FY14.xls

Borrower Transaction Level Detail OCLC ILL FY15 YTD.xls

Lender Overview FY13-FY15.xls

FY13 Transit Report MSC.xls

FY14 Transit Report MSC.xls

Monthly statistics were sampled from these months in the Borrower Transaction Level Detail reports for FY14 and FY15:

FY14

July 2013

October 2013

February 2014

June 2014

FY15

August 2014

November 2014

February 2015

May 2015