

Montana Library Broadband and E-Rate

Suzanne Reymer

Montana State Library

October 2013

State and County Differences in Broadband Availability

Table 4: 15 States with Most Broadband Access at 10, 25, and 50 Mbps

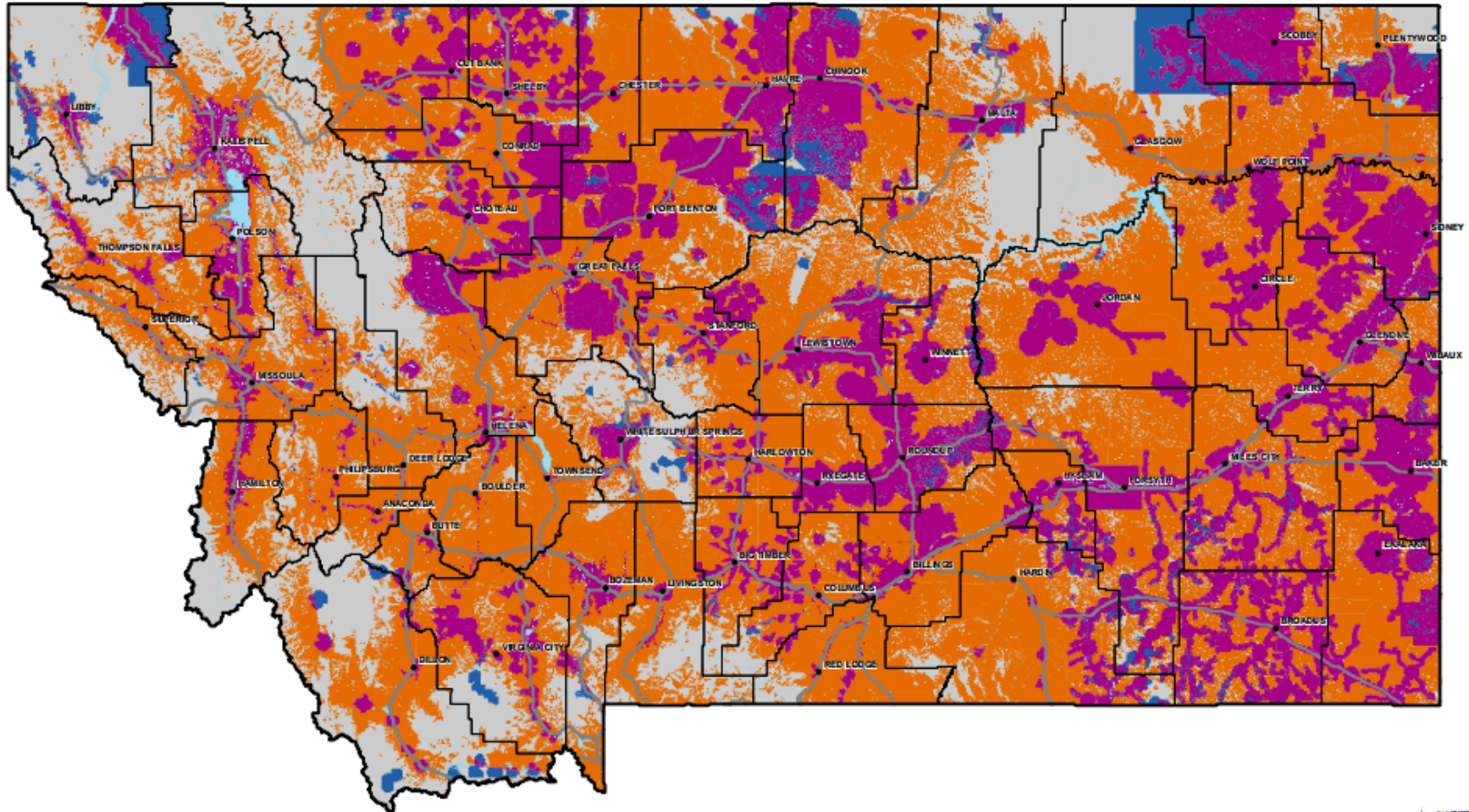
Most Access: ≥ 10 Mbps			Most Access: ≥ 25 Mbps			Most Access: ≥ 50 Mbps		
1	DC	100%	1	Rhode Island	99.62%	1	Rhode Island	99.62%
2	Rhode Island	99.80%	2	Connecticut	99.09%	2	DC	98.27%
3	Connecticut	99.75%	3	DC	98.44%	3	Connecticut	97.08%
4	New Jersey	99.48%	4	New Jersey	97.77%	4	Hawaii	96.94%
5	Delaware	99.29%	5	Hawaii	96.94%	5	Massachusetts	96.55%
6	Massachusetts	99.16%	6	Massachusetts	96.84%	6	New Jersey	96.37%
7	Maryland	98.99%	7	Delaware	95.81%	7	Delaware	95.78%
8	Hawaii	98.70%	8	Washington	95.28%	8	Washington	94.76%
9	Florida	98.47%	9	Oregon	92.73%	9	Oregon	92.20%
10	New York	98.39%	10	California	91.22%	10	New York	90.97%
11	Utah	98.35%	11	New York	91.04%	11	California	89.56%
12	Washington	98.15%	12	Florida	90.71%	12	Utah	89.22%
13	California	97.95%	13	Utah	90.71%	13	Maryland	88.91%
14	Pennsylvania	97.15%	14	Maryland	89.46%	14	Nevada	84.33%
15	Illinois	96.90%	15	Illinois	87.53%	15	Michigan	83.05%

Table 5: Five States with Least Broadband Access at 10, 25, and 50 Mbps

Least Access: ≥ 10 Mbps			Least Access: ≥ 25 Mbps			Least Access: ≥ 50 Mbps		
47	Wyoming	81.58%	47	Arkansas	28.54%	47	Iowa	19.81%
48	Alaska	81.40%	48	Wyoming	22.17%	48	New Mexico	10.85%
49	Mississippi	78.57%	49	Vermont	20.48%	49	Wyoming	2.27%
50	Montana	75.52%	50	Montana	12.71%	50	Montana	1.42%
51	West Virginia	69.69%	51	Alaska	0.06%	51	Alaska	0.00%

http://www.ntia.doc.gov/files/ntia/publications/usbb_avail_report_05102013.pdf

STATE BROADBAND AVAILABILITY



Map Description – This map illustrates the availability of broadband internet service by type, including wired and wireless broadband internet. Wired internet is defined as having a physical connection to the end user and includes DSL, cable modem, and fiber technologies. Wireless internet includes

broadband broadcast from cellular towers or fixed wireless which connects two fixed locations (e.g., buildings) with a radio or other wireless link. Please note that all cellular mobile wireless represents data only and not voice.

Project Description – In 2009 the National National Telecommunications and Information Administration awarded Montana Department of Commerce a grant to perform broadband mapping and planning. The purpose of the Montana Broadband Mapping is to collect data to aid in the development of an accurate map

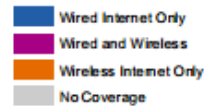
of broadband coverage in Montana.

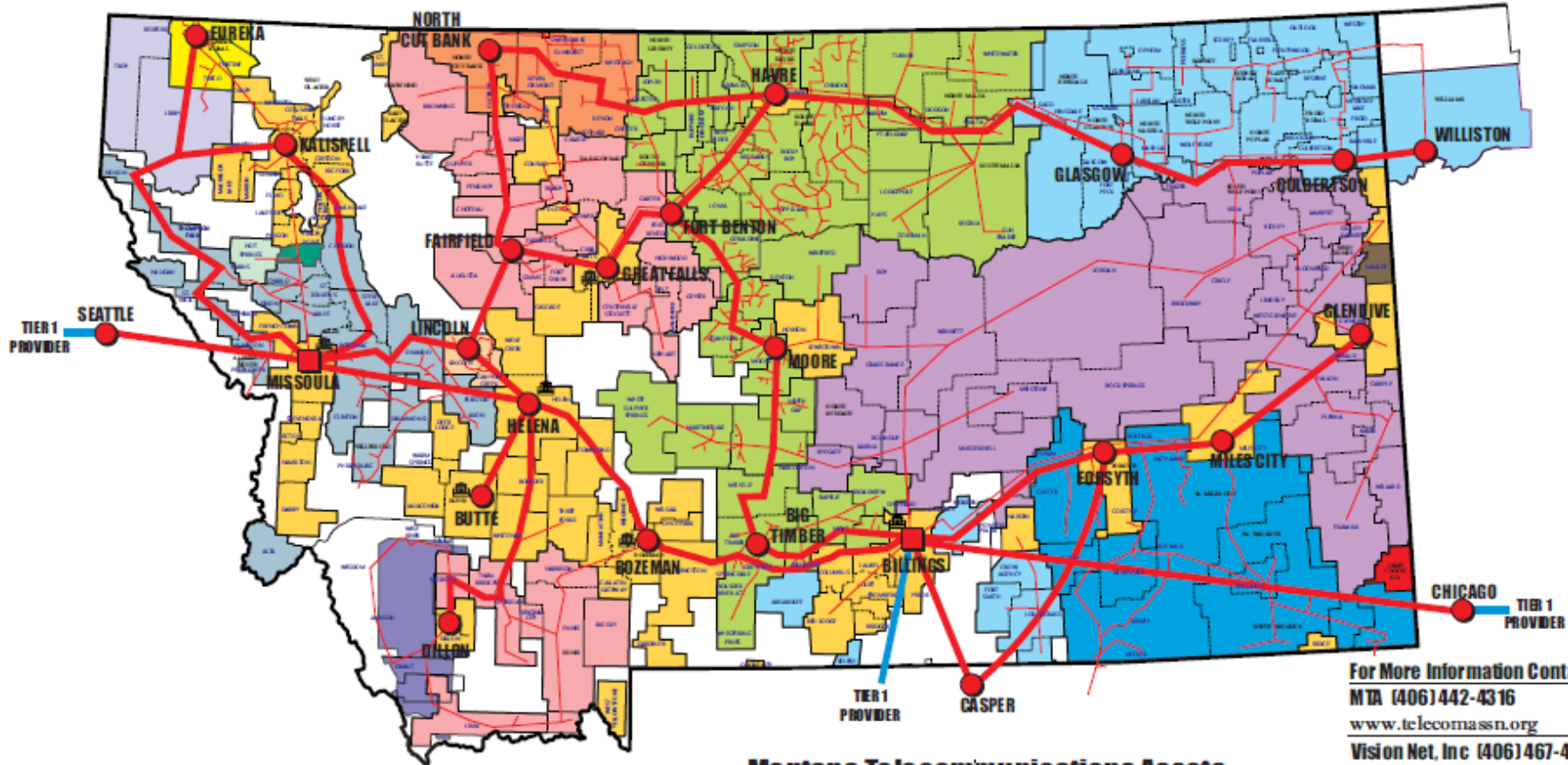
Data Source – Data in this map was developed by the Montana Broadband Mapping Project - <http://mtbroadband.org>.

Disclaimer – This map is for informational purposes only. The map is intended for use only at the published scale.

Date of Publication – April 1st, 2013

File Name – STBroadbandAvailability201304





For More Information Contact:
 MTA (406) 442-4316
www.telcomassn.org
 Vision Net, Inc (406) 467-4700
www.vision.net

Montana Telecommunications Assets

- INTERNET PEERING POPS
- EXISTING NODE
- iCONNECT FIBER HOTEL
- TIER 1 INTERNET
- VISION NET NETWORK (UP TO 10 G CAPACITY)
- EXISTING INDEPENDENT CO. FIBER OPTICS

<ul style="list-style-type: none"> BLACKFOOT TELECOMMUNICATIONS GROUP NEMONT TELEPHONE COOPERATIVE / PROJECT TELEPHONE COMPANY TRIANGLE TELEPHONE COOPERATIVE / CENTRAL MONTANA COMMUNICATIONS 	<ul style="list-style-type: none"> RESERVATION TELEPHONE COOPERATIVE RANGE TELEPHONE COOPERATIVE LINCOLN TELEPHONE COMPANY INTERBEL TELEPHONE COOPERATIVE 	<ul style="list-style-type: none"> MID-RIVER COMMUNICATIONS FRONTIER TELECOMMUNICATIONS 3 RIVERS COMMUNICATIONS RONAN TELEPHONE COMPANY 	<ul style="list-style-type: none"> HOT SPRINGS TELEPHONE COMPANY SOUTHERN MONTANA TELEPHONE COMPANY CENTURYLINK NORTHERN TELEPHONE COOPERATIVE WEST RIVER COOP TELEPHONE COMPANY UNASSIGNED AREA
--	---	---	---



E-Rate 2013

- 60 public libraries participated
- \$84,000+ requested
- 52 have received funding commitments
- 8 are still under review
- 30% of requests are for POTS (Plain Old Telephone Service) only
- Average discount 70%

FCC E-Rate NPRM

- MSL filed comments concerning
 - Elimination of POTS funding
 - Changes in rural status and definitions
 - Broadband targets of 100 Mbps and 1 Gbps
 - Responsibility of applicants for lack of competition and bids
- Reply period due to end October 16, 2013